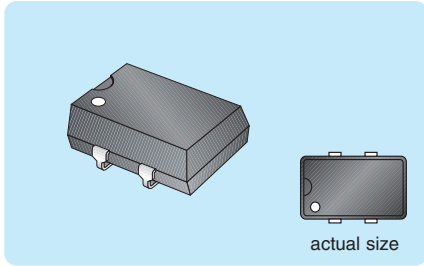


NDK type 1600B series

A series of high reliability surface mount quartz crystal oscillators, hermetically sealed and housed in a 4 terminal moulded package. Compatible with industry package types **IQXO-57**, **SG-615** and **'H' pack**. Operating from a 5Vdc supply they will directly drive CMOS/TTL. A stand-by function provides a tri-state output. Supplied taped and reeled.

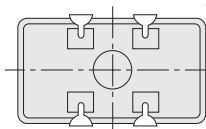
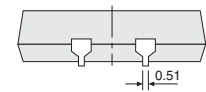
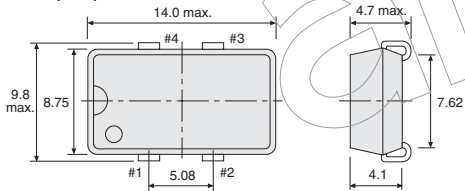


- ◆ High reliability
- ◆ **5V supply**, CMOS/TTL compatible
- ◆ Tri-state output with stand-by
- ◆ Wide choice of frequencies available
- ◆ Hermetically sealed crystal unit
- ◆ Moulded package
- ◆ Supplied taped & reeled

Specification

Series	1629B	1631B	1632B	1633B	1634B	1635B
Supply voltage	5.0Vdc \pm 10%					
Supply current	20mA	18mA	18mA	20mA	25mA	30mA
Output load (fanout)	10TTL or 15pF		15pF			
Frequency stability	\pm 50ppm					
'0'/'1' levels	0.4Vmax./4.5Vmin.		0.5Vmax./4.5Vmin.			
Rise/fall times (0.1V _{DD} -0.9V _{DD})	5ns max./5ns max.					
Duty cycle (1/2V _{DD})	40 to 60%		45 to 55%			
Oper. temp. range	-20°C to +70°C					

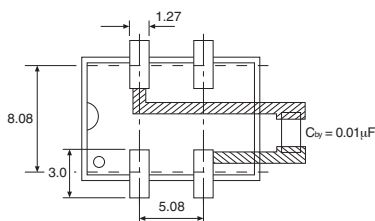
Dimensions (mm)



Connections

- #1 = Stand-by
- #2 = Ground
- #3 = Output
- #4 = V_{DD}

Pad Pattern



Frequency MHz	Applications	Compatibility		Manf. Part No. & anglia Order Code
		CMOS	TTL	
3.579545	Modem	●	●	1629B035
3.6864	Micro & Modem	●	●	1629B037
4.0	Microprocessor	●	●	1629B040
4.096	Telecom & Modem	●	●	1629B0409
7.3728	Micro & Modem	●	●	1629B073
7.68	ISDN	●	●	1629B076
8.0	Microprocessor	●	●	1629B080
8.192	Telecom	●	●	1629B081
9.8304	Modem	●	●	1629B098
10.0	Micro & Satcom	●	●	1629B100
11.0592	Mobile Comm & Modem	●	●	1629B111
12.0	Microprocessor	●	●	1629B120
12.288	Ethernet, ISDN & MPEG	●	●	1629B122
12.8	Telecom	●	●	1629B128
13.0	GSM	●	●	1629B130
14.31818	Microprocessor	●	●	1629B143
14.7456	Micro, Modem & xDSL	●	●	1629B147
16.0	Microprocessor	●	●	1629B160
16.384	Telecom	●	●	1629B163
17.734475	PAL TV	●	●	1629B177
18.432	Micro, Modem, MPEG, DVD & STB	●	●	1629B184
19.44	SONET & Satcom	●	●	1629B194
20.0	Microprocessor	●	●	1629B200
24.0	Microprocessor	●	●	1629B240
24.576	MPEG & xDSL	●	●	1629B245
25.0	Micro & Gigabit Ethernet	●	●	1629B250
26.0	GSM	●		1631B260
27.0	MPEG, STB & DVD	●		1631B270
32.768	Telecom	●		1632B327
36.864	Telecom	●		1633B368
40.0	Micro & Ethernet	●		1633B400
50.0	Gigabit Ethernet & ADSL	●		1634B500
62.5	Gigabit Ethernet	●		1635B625

NOT RECOMMENDED FOR NEW DESIGNS
please contact our Sales Desk for details of alternative products

NDK surface mount crystal oscillators
continued overleaf > > >